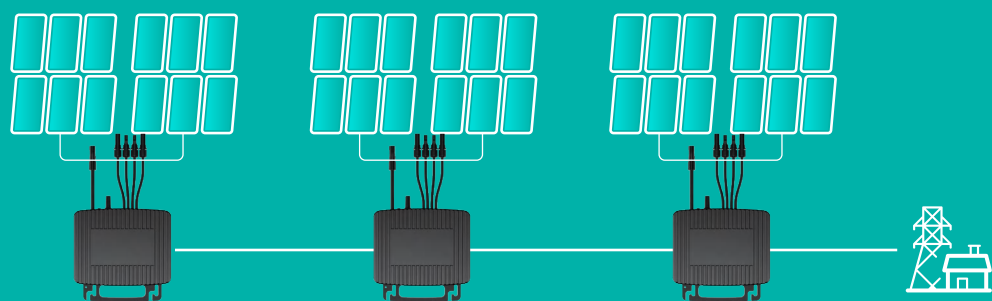


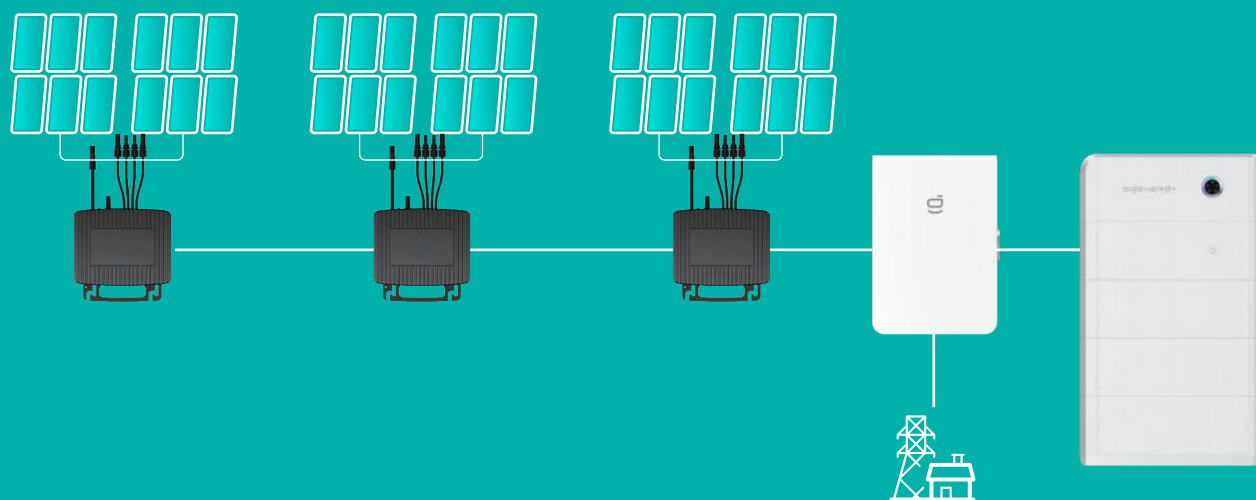
Solution 1:

## On-Grid PV Only



Solution 2:

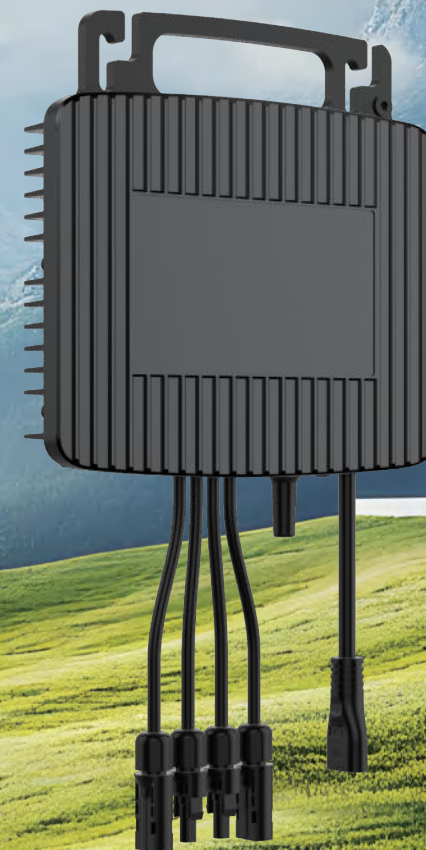
## Micro-Grid PV+ESS



**Sigenergy** focuses on developing cutting-edge home and business energy solutions, with products ranging from energy storage systems to solar inverters and EV chargers. Our world-class R&D team of hundreds of top industry experts shares the vision of making the world greener via continuous innovation. With global sales and services, we aim to become our customers' most trusted partner on their journey to a more sustainable future.

[www.sigenergy.com](http://www.sigenergy.com)

Disclaimer: The information in this file is provided on an "as is" basis. To the fullest extent permitted by law, Sigenergy Technology Co., Ltd. excludes all representations and warranties relating to this file and its contents or which is or may be provided by any affiliates or any other third party, including in relation to any inaccuracies or omissions in this file.



# SigenMicro Inverter

1-in-1 400 / 500W 2-in-1 800 / 1000 W



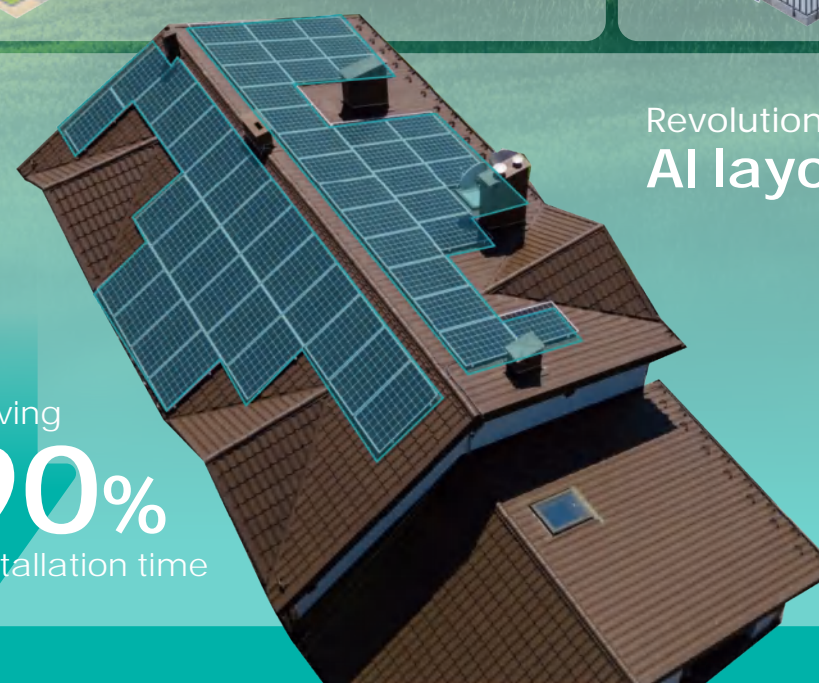
## Rooftop solar

Boost earnings with module-level MPPT



## Balcony solar

Turn your balcony into the fortress



Revolutionize installation speed with  
**AI layout recognition**

Saving

**90%**

Installation time





EMS inside,  
free from network gateway



Saving CAPEX

Simplify installation

Traditional

€ 500  
Network Gateway cost

97.5%

High efficiency

The highest efficiency at the 1kW power level.



Whitelist security

Meets European  
ETSI/EN 303 645 standard

Innovative WiFi-Mesh Comm.

The world's first in the industry to apply WiFi – Mesh technology to the MLPE field



Auto-networking  
Effortless setup, instant expansion.

Self-healing  
Ultra stability, zero downtime.

High-coverage  
Mesh blankets every corner



Perfect Synergy with SigenStor

Seamless Integration with EMS for precise control



IP67 Protection

Durable in harsh environment

SigenMicro Inverter

Preliminary

SigenMicro	400			500			800			1000			Units									
DC Input																						
Commonly used module power	320 ~ 540+			400 ~ 670+			(320 ~ 540+) x 2			(400 ~ 670+) x 2			W									
Start-up voltage				20									V									
Min. / Max. PV input voltage				16 ~ 60									V									
MPPT voltage range				16 ~ 60									V									
Number of modules connected	1			1			2			2												
Max. input current	16 x 1			16 x 1			16 x 2			16 x 2			A									
Max. input short-circuit current	25 x 1			25 x 1			25 x 2			25 x 2			A									
AC Output																						
Grid type	Single Phase																					
Nominal output power	400			500			800			1000			W									
Nominal output current	1.82	1.74	1.67	2.27	2.17	2.08	3.64	3.48	3.33	4.55	4.35	4.17	A									
Nominal output voltage	220	230	240	220	230	240	220	230	240	220	230	240	V									
Nominal output voltage range <sup>1</sup>	184 ~ 275																					
Nominal grid frequency	50 / 60												Hz									
Grid frequency range <sup>1</sup>	45 ~ 55 / 57 ~ 63												Hz									
Total current harmonic distortion	THDi < 3% (at nominal power)																					
Power factor	0.8 leading ~ 0.8 lagging																					
Max. units per branch <sup>2</sup> (2.5 mm <sup>2</sup> )	8	9	9	7	7	7	4	4	4	3	3	3										
Max. units per branch <sup>2</sup> (4.0 mm <sup>2</sup> )	13	13	14	10	11	11	6	6	7	5	5	5										
Efficiency																						
Max. efficiency	97.5%																					
European efficiency	96.7%																					
Monitoring & Protection																						
Grid monitoring	Supported																					
Ground fault detection	Supported																					
PV module-level monitoring	Supported																					
Rapid shutdown	Supported																					
Surge protection	Supported																					
General Data																						
Dimensions (W / H / D)	232 / 186 / 35 (without bracket)												mm									
Weight	2.5			2.5			2.8			2.8			kg									
Storage temperature range	-40 ~ 85												°C									
Operating temperature range	-40 ~ 65												°C									
Relative humidity range	0% ~ 100%																					
Max. operation altitude	4000												m									
Cooling	Natural convection																					
Topology	High Frequency Transformers, Galvanically Isolated																					
Night power consumption	< 50												mW									
Ingress protection rating	IP67																					
Display	LED																					
Communication	WLAN																					
AC connection type	Plug and play connector																					
Installation method	Bracket mounted																					

1. Nominal output voltage range and grid frequency range can vary depending on local requirements.  
2. Limitations may differ by region. For the exact number of microinverters permitted per branch circuit, please refer to local regulations and standards.  
3. SigenMicro is only available in specific regions. Please contact Sigenergy or local distributors for details.